

## ADDITIONAL INFORMATION

Questions?

**Approximately how long will this kit last?**

- 30-days is typical.

**How do I order more?**

- Contact your skin care professional!

**What are skin care professionals saying about SOLURETINOL?**

*"We're seeing the effects of hydration with visible plumping in days instead of months."*

*"This is fastest we've seen noticeable results from a trans-dermal filler."*

*"I love that it isn't whole line of products. I can just add it in. We're using it with clients who are already doing the right things for their skin and seeing good results."*

*"I have clients coming back in to buy more before they are done with the first kit. That's how I know this is really something different."*

# SOLURETINOL



## ANTI-AGING TOPICAL FILLER

THE FASTEST-ACTING TRANS-DERMAL  
FILLER ON THE MARKET.

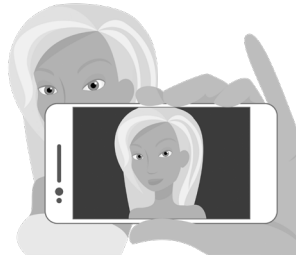


HydroSOLyzed™

Patents pending engineered nanotechnology that shows noticeable improvement in about three weeks. It takes three months to develop collagen for the same results.

## Step 1: Take Pictures

Benchmark where your skin is starting from. Ask your skincare professional to do it for you or take a couple pics yourself. It is very difficult for non-professionals to see improvement when they see themselves in the mirror a few times every day!



**1 - 10 - 20  
Days**



### Start with ...

Wash your face and pat dry.



### Good Lighting

“Natural light” (in front of a window) is best. Hold your phone at arm’s length and take a good front on shot without flash.

Optional: Take 2 more with head turned to each side.



### Get Close

Zoom in on that image(s) to identify areas that you may want to focus on:

- Corners of eyes
- Brow lines
- Corners of mouth
- Neck



### Repeat & Compare!

Take another set of images at **10-days**, and again at **20-days**. Note effects on your areas of focus.

## Step 2: Apply Serums

*Applies to both Daytime & Nighttime serums.*

### Important...

DO NOT USE “Night-time Serum” WHEN PREGNANT OR NURSING.

For external use only.

Test for sensitivity on a small area of the skin. Do Not use on damaged or broken skin. Avoid Contact with eyes. Keep out of reach of children.



### Start with ...

... Always apply serums to properly washed face with clean hands. Use a soft cloth - a facial microfiber cloth is optimal.



### Start With Focus Areas

Draw serum into dropper – holding dropper in one hand, apply several drops to middle fingers. Apply pushing upward with tips of fingers ... first to the areas of concern around mouth, eyes, and forehead. Add more drops of serum as needed.



### Apply to Face & Neck

Once the serum has been applied to focus areas, work the entire face. Again, pushing up into the skin with the tips of the fingers from bottom up. Apply to neck if needed.



### Finish

Wait 2-minutes - then finish with your regular moisturizing and make-up routine.